



INTRODUCTION TO AUTOCLAVES

1 DAY TRAINING COURSE

Our courses are designed to provide practical validation knowledge and experience allowing you to perform effectively.

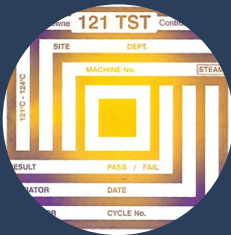


Introduction to Autoclaves

How Autoclaves work

Autoclave Loads

- Fluids Loads
 - Control Probe Placement
- Porous Loads
 - Air Detectors
- How to Review an Autoclave Printout



Routine Testing

- Leak Rate Test
- Bowie Dick Test
- Chemical and Biological Indicators
- Air Detector Function Test
- Overview of Calibration
- Overview of Validation

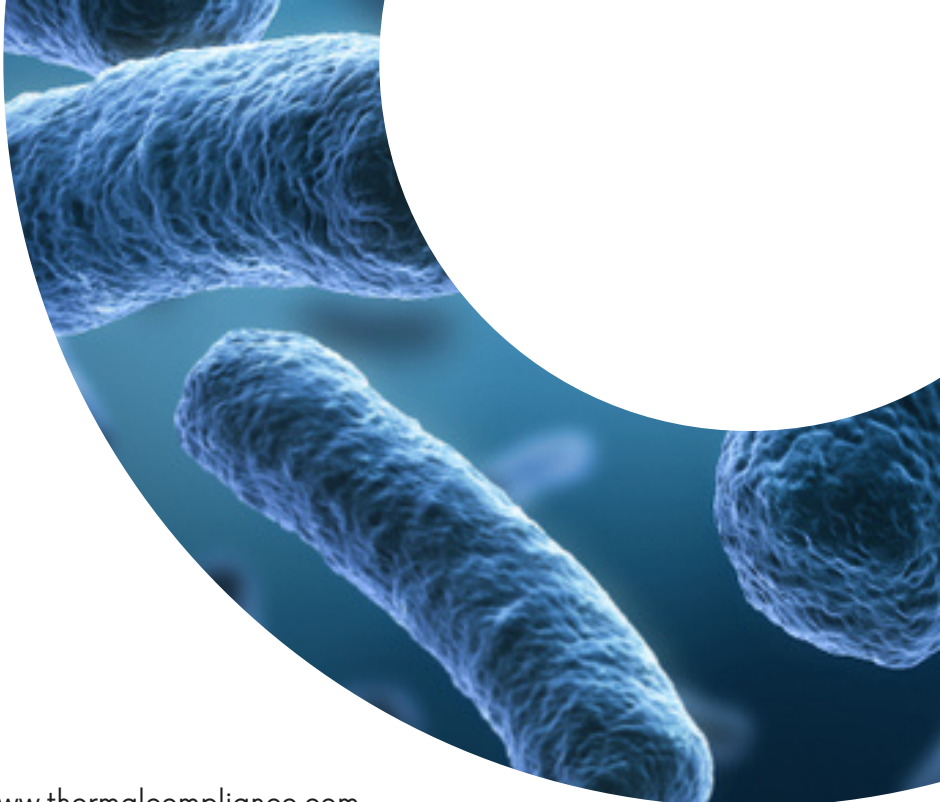
Load Wrapping and Orientation

- Standard Operating Procedures
- Types of Load Wrapping
- Load Orientation
- Autoclave Tape



Failure Modes

- How to inspect a load and check a cycle.
- Wet Loads and How to Avoid them
- Superheat
- Alarms and Failed Cycles



WHERE AND WHEN?

Online

Via Zoom and our training platform www.thermalcompliance.com

Onsite




At your facility, our Training Centre or one of our public hotel courses.

Our Public course dates are listed at www.thermalcompliance.co.uk

Bespoke

Our courses can be adapted to your site, our trainers can use your loads, your validation equipment and your process

WHO SHOULD ATTEND?

-  **AUTOClave OPERATORS**
-  **LABORATORY PERSONNEL**
-  **QUALITY ASSURANCE**

FURTHER LEARNING

We also offer the following training courses:

Advanced Temperature Mapping

Advanced Autoclave Validation

**Contact Us For More
Information :**

00 44 (0) 1748 327 247
chrism@thermalcompliance.co.uk
www.thermalcompliance.co.uk

